

Viewing Service Area Registrations

After logging in, click on the Service Areas option in the menu on the left-hand side of your screen. Click on the Service Area name that you want to view.

Indiana 811 Switch to Kentucky 811

Service Areas

Filter by Name or Code [clear filters](#)

View: System Default Filter: System Default 0 Selected

| Name ↑ | Code | Open 24x7 | Active |
|--------------------------------|-------|-----------|--------|
| <input type="checkbox"/> TEST1 | TEST1 | Yes | Yes |

You will then click on the Registrations tab to view the all versions that exist for that Service Area.

TEST1 (TEST1)

Basic Audits Hours and Holidays Contacts Attributes Delivery Rules Service Providers Ticket Assignment Registrations

General Info **General Info** [Down](#)

Positive Response Code: TEST1
Name: TEST1
Member: TEST1
Code: TEST1

The Registration that contains the Active version will be listed as Active and show details for when it was Created, Completed and Approved. To view the Active Registration, click on the View Map link.

TEST1 (TEST1)

Basic Audits Hours and Holidays Contacts Attributes Delivery Rules Service Providers Ticket Assignment Registrations

Registrations [add](#)

| Version | Status | Created | Completed | Approved | View Map | Complete |
|------------|------------------|------------------------------------------|------------------------------------------|---------------------------------------|--------------------------|--------------------------|
| Version 40 | Active | 03/10/2021 03:03 PM by JILL GAST -- TEST | 03/10/2021 03:03 PM by JILL GAST -- TEST | 03/10/2021 03:04 PM by CARLY DUNSMORE | View Map | |
| Version 39 | Approved for use | 02/18/2021 03:04 PM | 03/10/2021 02:56 PM by JILL GAST -- TEST | 03/10/2021 02:56 PM by CARLY DUNSMORE | View Map | |
| Version 38 | Not Complete | 01/05/2021 03:56 PM by CORY LUEDTKE | | | View Map | Complete |
| Version 37 | Not Complete | 01/05/2021 07:55 AM by CARLY DUNSMORE | | | View Map | Complete |
| Version 36 | Not Complete | 09/09/2020 07:40 AM by CARLY DUNSMORE | | | View Map | Complete |
| Version 35 | Not Complete | 03/05/2020 10:09 AM by CARLY DUNSMORE | | | View Map | Complete |
| Version 32 | Approved for use | 02/13/2018 03:02 PM | 02/14/2018 02:47 PM | 02/14/2018 02:48 PM | View Map | |

Home
Registration Version: 40
List

Tickets
TEST1 (TEST1)

Service Areas
Status: Active

Created:
03/10/2021 03:03 PM
by JILL GAST -- TEST

Completed:
03/10/2021 03:03 PM
by JILL GAST -- TEST

Approved:
03/10/2021 03:04 PM
by CARLY DUNSMORE

Changes:
[show on map](#)

1: 03/10/2021 03:03 PM

v 1.3.49
39.8402, -86.3325

By clicking on the Changes button, you can view edits that were made to this version prior to Approving and Activating. The deletions will be shown in green and the additions will be shown in blue. You can then click Hide on Map if you want to view the Active Registration.

Home
Registration Version: 40
List

Tickets
TEST1 (TEST1)

Service Areas
Status: Active

Created:
03/10/2021 03:03 PM
by JILL GAST -- TEST

Completed:
03/10/2021 03:03 PM
by JILL GAST -- TEST

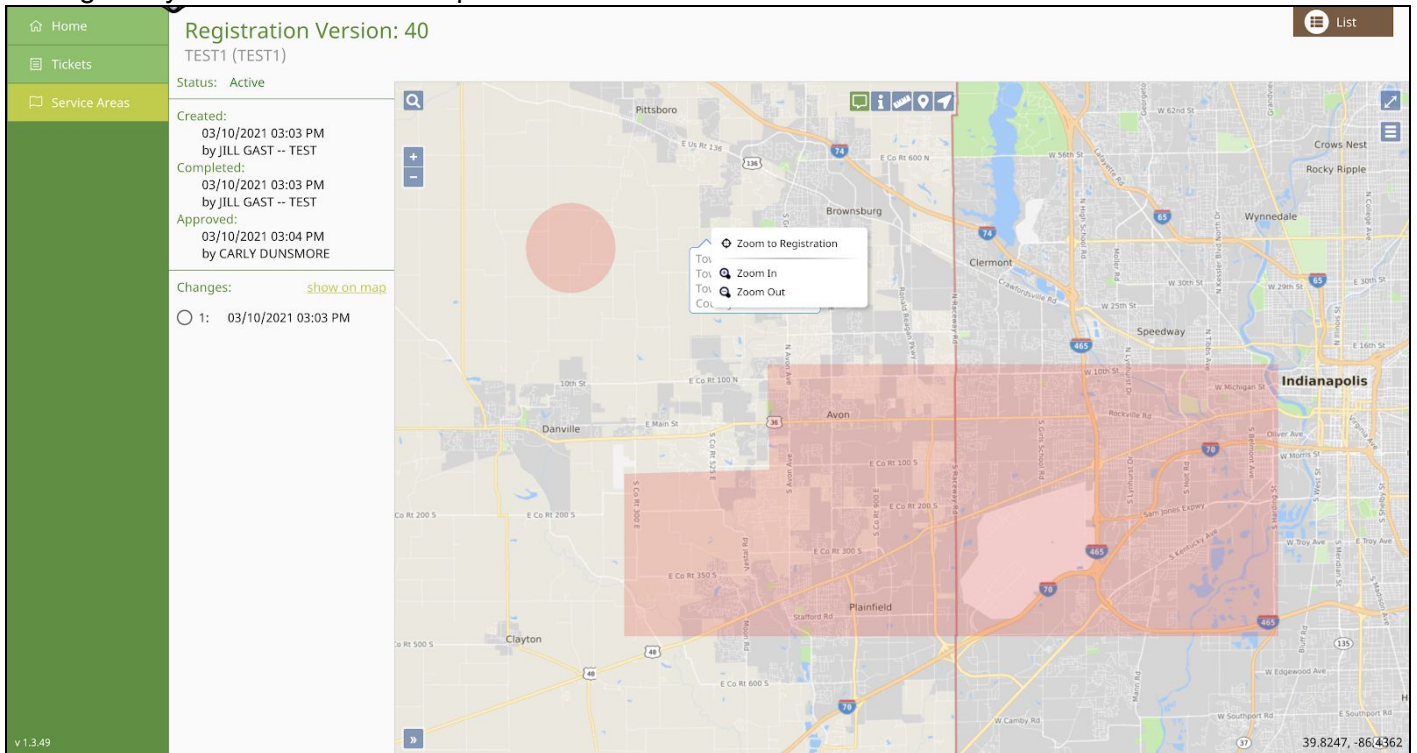
Approved:
03/10/2021 03:04 PM
by CARLY DUNSMORE

Changes:
[hide on map](#)

1: 03/10/2021 03:03 PM

v 1.3.49
39.8378, -86.4224

There are also options for Zooming to locations on the map. You can also access those options by right clicking with your mouse on the map.



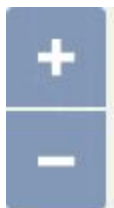
Mapping Features



Search Option

The Search icon will let you search Streets, Intersections, Places, Counties and Points of Interest. You can set parameters for the search to Within Map View and Entire Map. Please note that it automatically defaults to Entire Map. You will also have the option to search Lat/Lon Coordinates.

- **Street/Road** - To search for a specific street or road name, you can type in part or all of the name.
- **Intersection** - To search for an Intersection, you will enter the information in as street & cross street.
- **Place** - To search for a Place, type in the name of the Place.
- **County** - To search for a County, type in the name of the County.
- **Point of Interest** - To search for a Point of Interest (POI), type in the name or part of the name. POI's can be parks, cemeteries, railroads, restaurants, banks, etc. If the POI that you are trying to locate is found, select it and the map will focus to its location.
- **Lat/Lon Coordinates** - To find a location using lat/lon coordinates, type in the coordinates and then **hit the enter key**. The location will be noted on the map with a red pushpin icon.



Zoom In (+), Zoom Out (-)

Clicking on the Plus (+) or Minus (-) icons will let you Zoom In and Zoom Out on the map. You can also right click on the map to select the Zoom In and Zoom out options or use the wheel on your mouse for Zooming.

Note: While using the mouse wheel to zoom in and out on the map, you can also move the map around by holding down the left mouse button to drag the map.



Show Map Information At Current Location

This tool allows you to hover over a location to see the street, place and county information. This option can be turned on and off, and your browser will remember how you want this set. When the icon is green, the map information will be displayed for approximately 5 seconds.



Show Map Information for Location

This tool allows you to left click on any area to display the street, place and county information.



Ruler

The Ruler allow you to measure distance in many ways. You can measure the distance from one intersection to another, the distance from a road into a field, and the distance along a road. You can also use the tool to click multiple points. A total footage will also be displayed. You can click on Clear to remove all measured distances and on Done when you have finished using this feature.



Push Pin

The Push Pin allows you to place multiple Push Pins on the map to mark locations. They also remain visible no matter how far out you zoom. You can click on Clear to remove all push pins and on Done when you have finished using this feature.



Position To Your Current Location

This tool was developed for individuals using mobile devices. Using this feature on a mobile device, your current location will automatically be detected and will be displayed on the map. If you are using a non-mobile device, right click on the map and select Zoom To Dig Site.



Toggle Full Screen

The Toggle Full Screen allows you to expand the map to cover the entire screen. To go back to the normal view, you can hit the Esc key or click on the X icon.



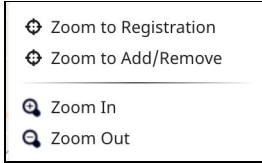
Toggle Base Map

The Toggle Base Map option allows you to switch back and forth from a street view of the base map to an aerial view of the base map. **Please note that all map features are available on either view.** To switch back and forth between views, just click on the Toggle Base Map icon.



Overview Map

This tool allows you to see an expanded/zoomed out overview of the selected area. This will display in the bottom left hand corner of the map. To remove this view, click on the Overview icon.



Zoom To Registration and Zoom to Add/Remove

If you Zoom away from the service area, you can right click and select Zoom to Registration to view the entire service area. If there are pending additions and/or deletions, you can Zoom to those areas.