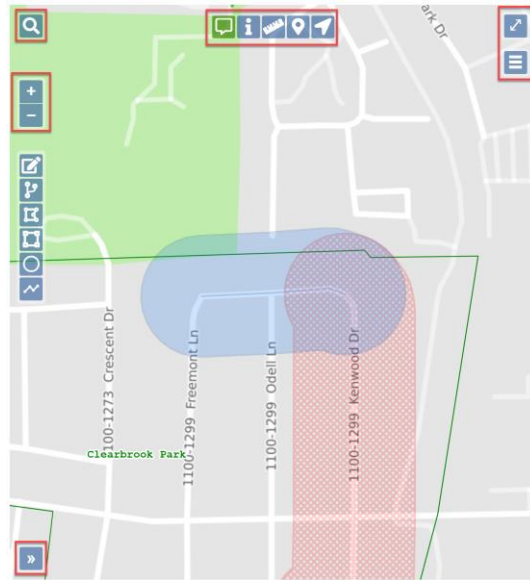




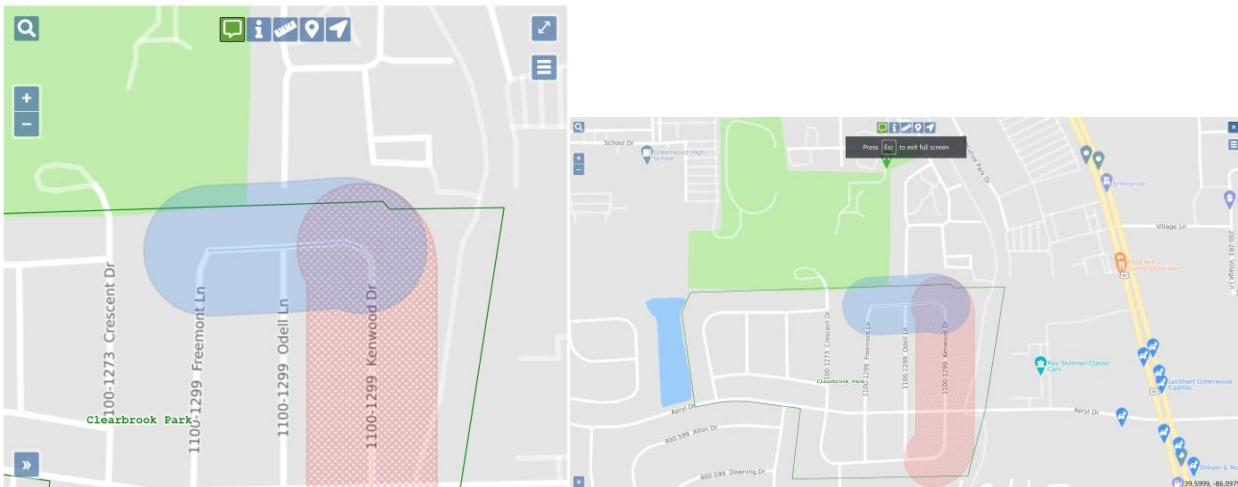
Mapping Features




Note: If your browser is not in full screen mode, the map will not appear unless you click on the **Show Map and side panels-->** link on the right side of your screen. Clicking on the **<--Show Ticket** link will return you to the ticket text. These links can be found at the top of the ticket. Not all tools are available when you are not in full screen mode.

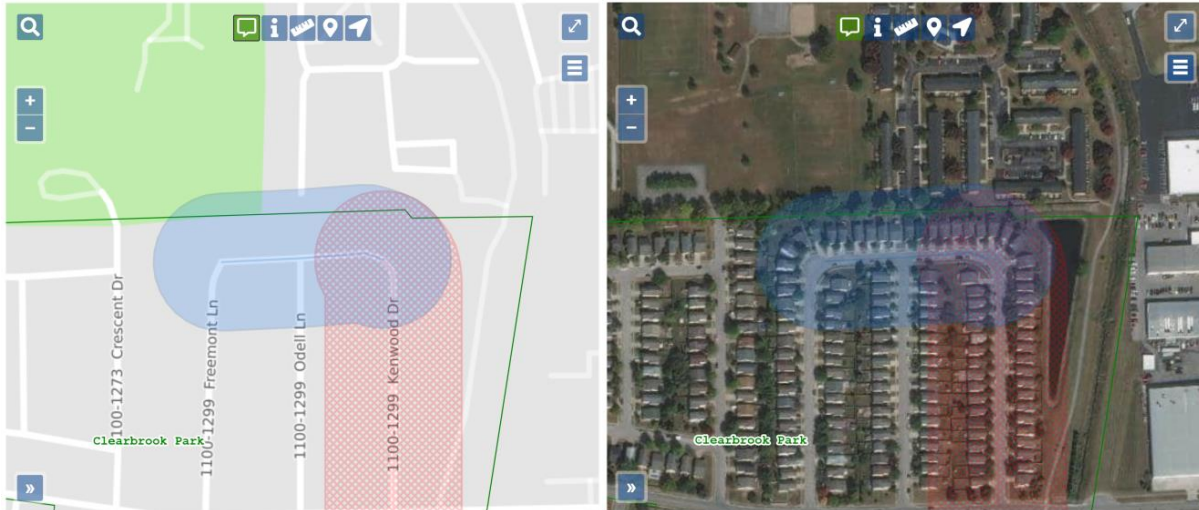
Toggle Full Screen

The Toggle Full Screen icon  in the top right corner of the map allows you to expand the map to cover the entire screen. To go back to the normal view, you can hit the Esc key or click on the X icon  in the top right corner of the screen.




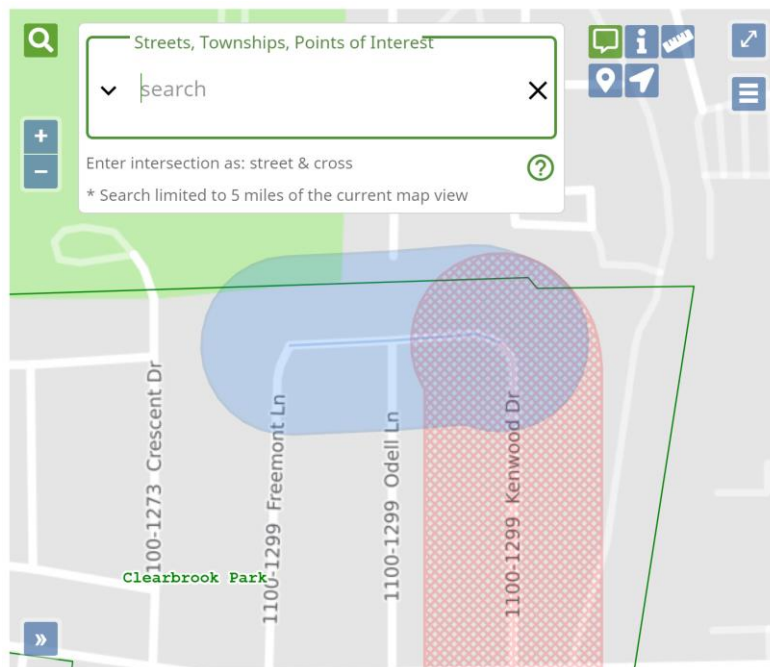
Toggle Base Map

The Toggle Base Map icon  on the right side of the map near the top allows you to switch back and forth from a street view of the base map to an aerial view of the base map. Please note that all map features are available on either view but the aerial view does not currently show street names. To switch back and forth between views, just click on the Toggle Base Map icon again.



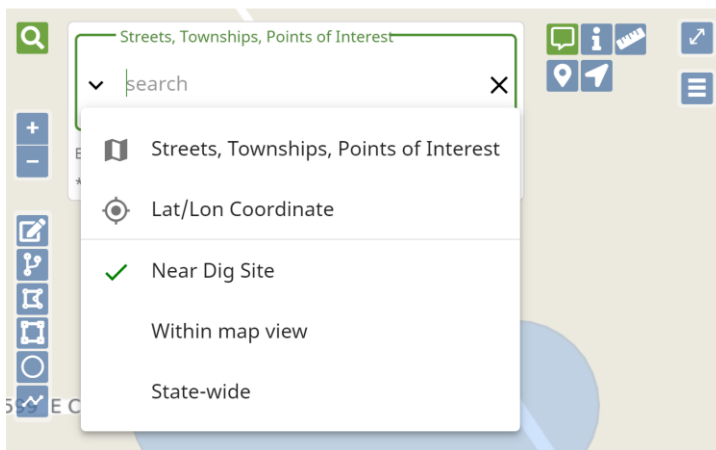
Search Option

Clicking on the Search icon  in the top left corner of the map will let you search by Streets, Intersections, Townships/Places, Counties and Points of Interest, as well as Latitude/Longitude Coordinates. Clicking on the Search Icon a second time will close the search box.



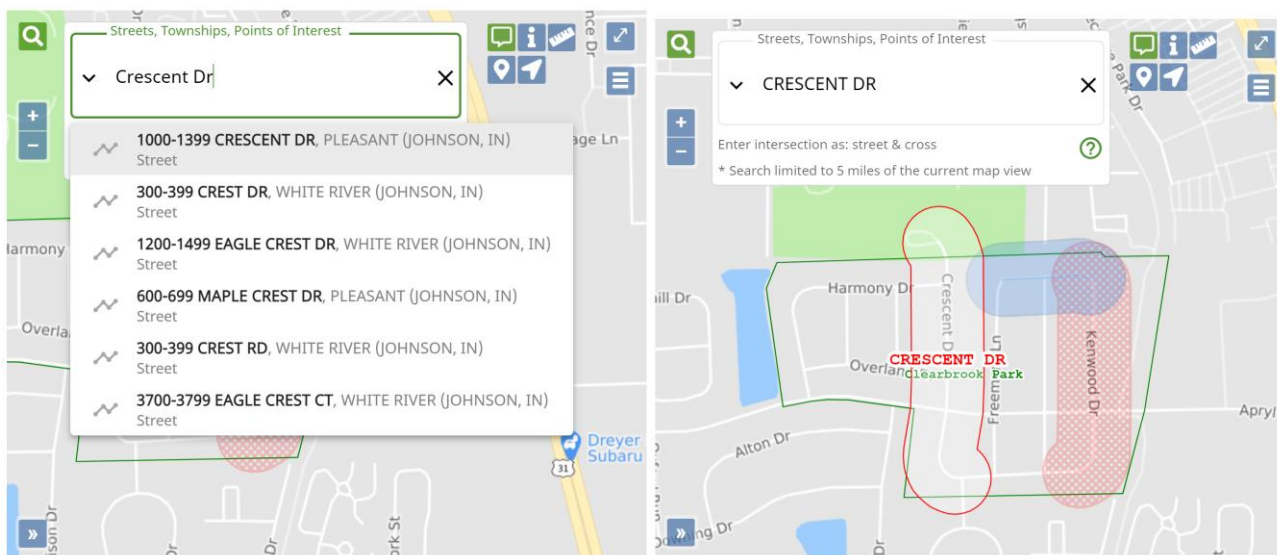
Search Options for finding Streets, Intersections, Places, Counties, and Points of Interest

Clicking on the drop-down carrot to the left of the word search will allow you to set the parameters for the search to Near Dig Site, Within Map View, and State-Wide. Please note that the search automatically defaults to Near Dig Site.



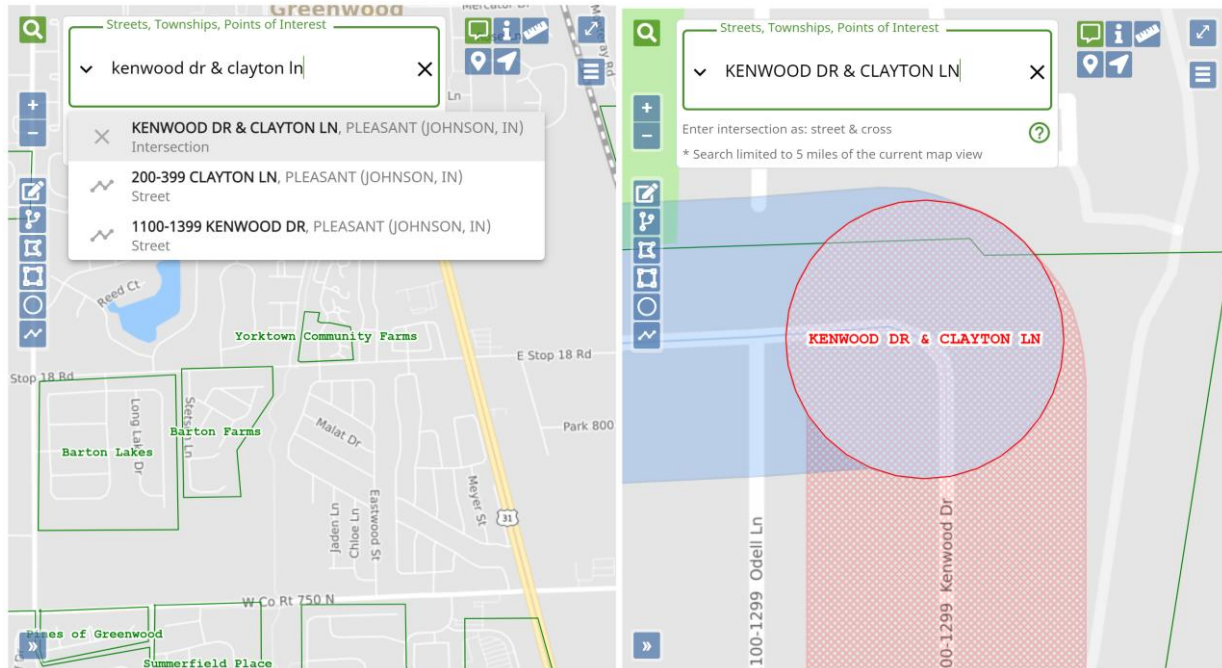
Street/Road

To search for a specific street or road name, you can type in part or all of the name. The search will provide both exact and partial matches. Be sure to select the correct option, as it may not be the first available.



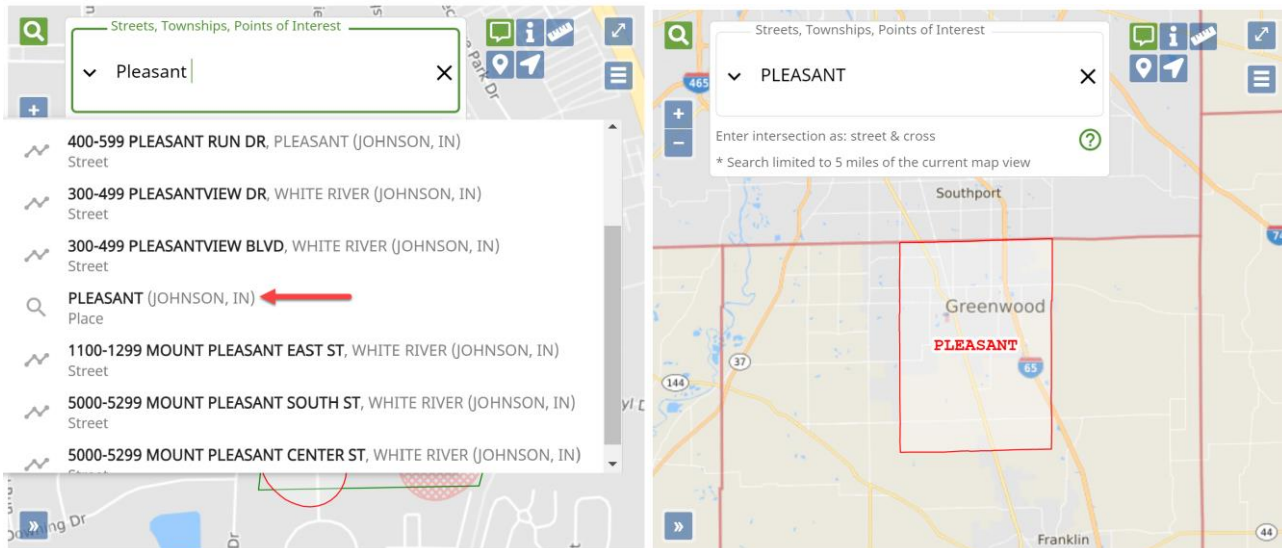
Intersection

To search for an Intersection, you will enter the information in as *street & cross street*. The intersection results are shown with an x symbol in front of the road names.



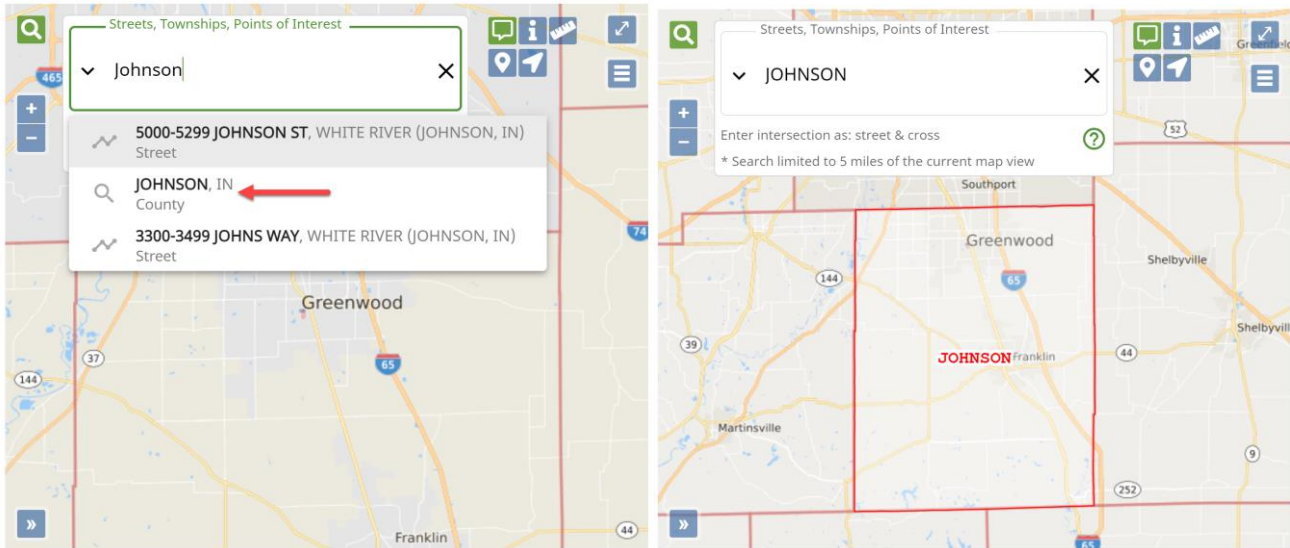
Place

To search for a Place, type in the name of the Place, and select it from the drop-down options. In Indiana Place means the township, in Kentucky it means the city or town.



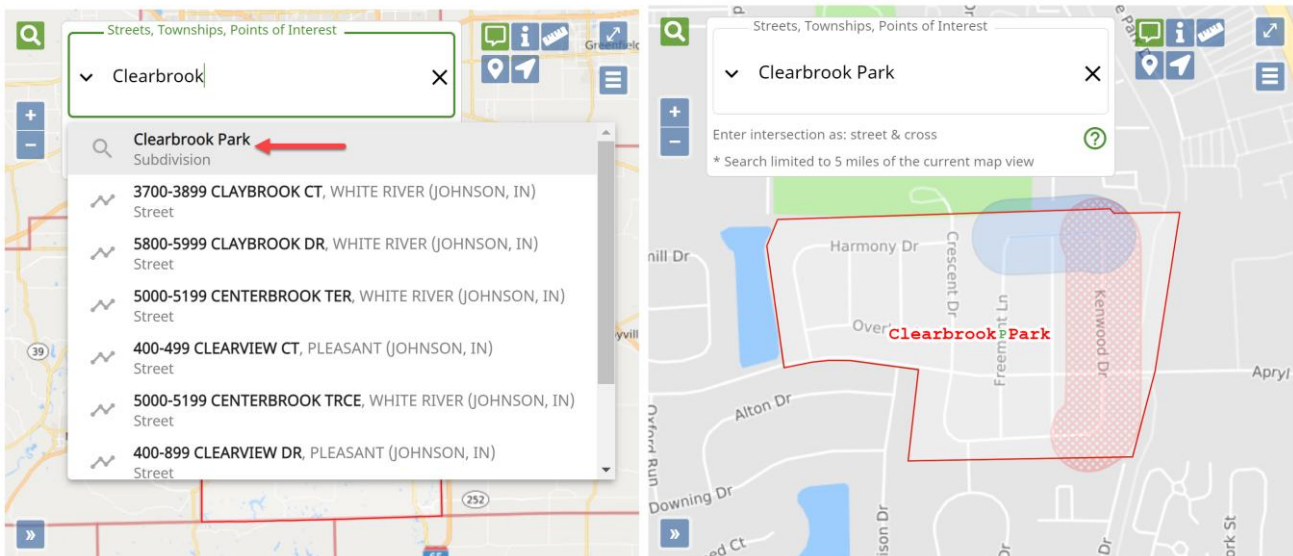
County

To search for a County, type in the name of the County. Select the desired option.



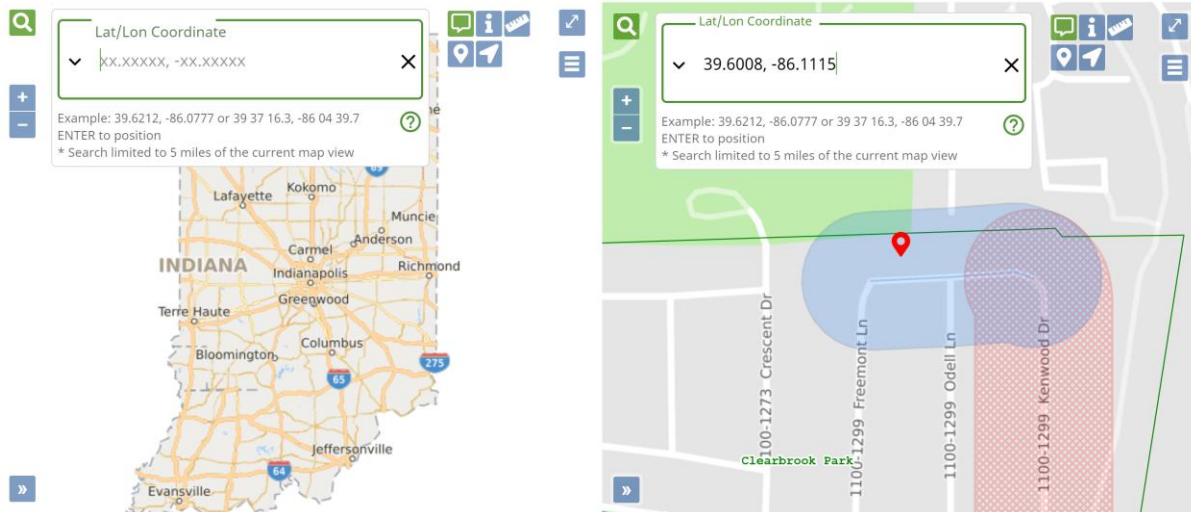
Point of Interest

To search for a Point of Interest (POI), type in the name or part of the name. POI's can be subdivisions, parks, cemeteries, railroads, restaurants, banks, etc. If the POI that you are trying to locate is found, select it and the map will focus on that location.



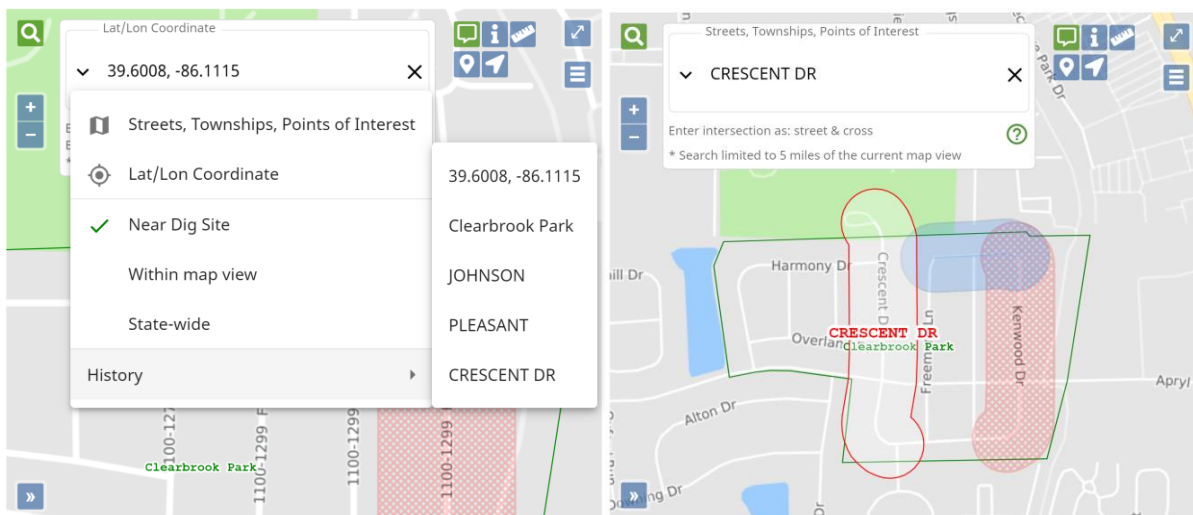
Lat/Lon Coordinates

To find a location using lat/lon coordinates, click on the drop-down carrot to the left of the word search, then select "Lat/Lon Coordinate". Type in the latitude followed by a comma and then type in the longitude and press the Enter key. Coordinates may not exceed seven digits. When utilizing coordinates in Degrees, Minutes and Seconds, single digit Minutes must be entered using two digits. (ex: 1 minute=01). The location will be noted on the map with a red pushpin icon. If a second coordinate will be entered, manually place a push pin in the location of the first coordinate as it will disappear when the second coordinate is entered.




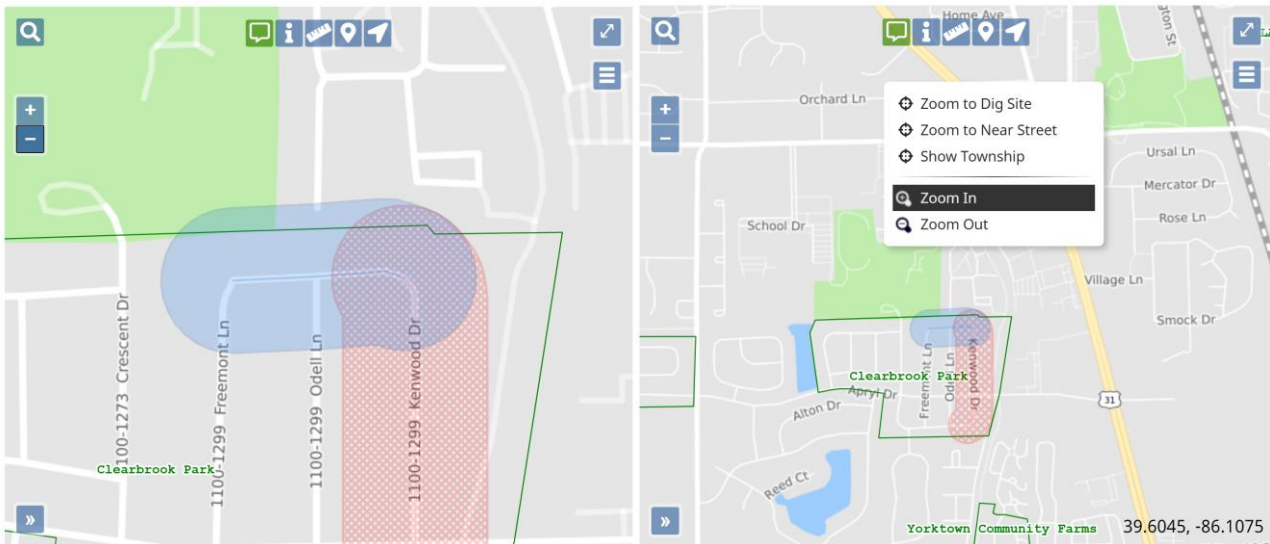
History

History tracks all of the searches you have conducted during your session and you can select a previous search and bring it back up again.




Zoom In (+), Zoom Out (-)

Clicking on the Plus (+) or Minus (-) icons  on the left side of the map near the top will let you Zoom In and Zoom Out on the map. You can also right click on the map to select the Zoom In and Zoom Out options or use the wheel on your mouse.




Note: While using the mouse wheel to zoom in and out on the map, you can also move the map around by holding down the left mouse button to drag the map.

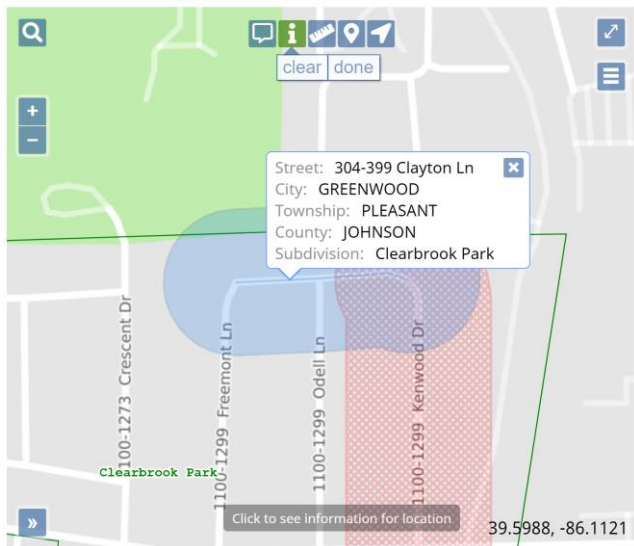
Show Map Features at the current cursor position

Using the Show Map Features at the current cursor position icon  in the top center of the map allows you to hover over a location to see streets with an address range (if present), points of interest, as well as the city, town, township, and county information. When the icon is green, that means that the map information will be displayed for approximately 5 seconds.




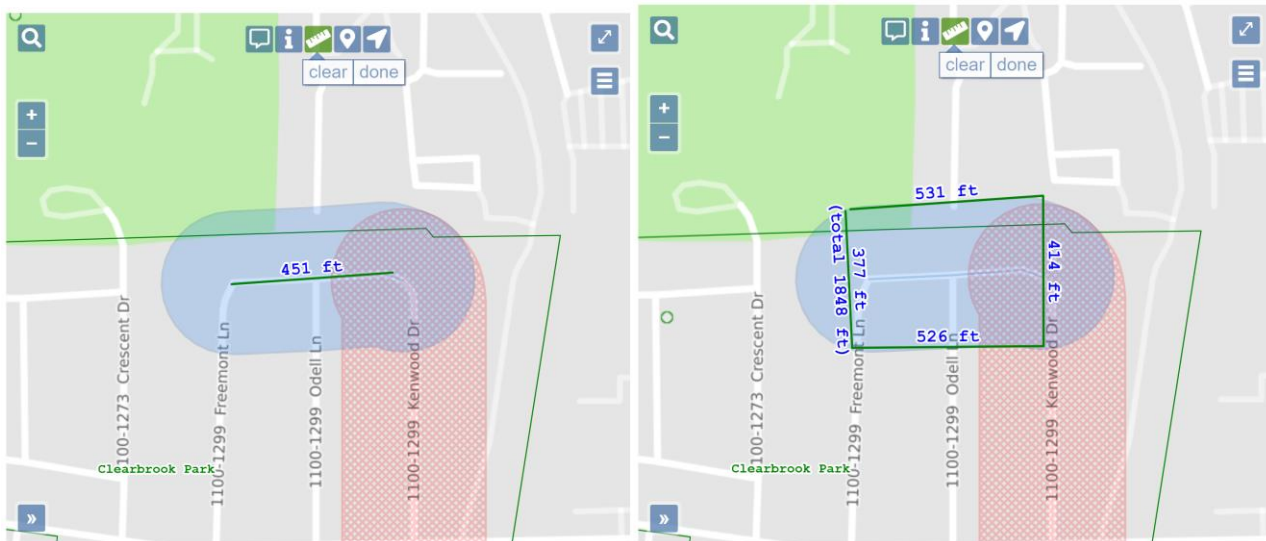
Show Map Information for Location

Using the Show Map Information for Location icon  in the top center of the map allows you to left click on any area of the map to display streets with an address range (if present), points of interest, as well as the city, town, township, and county information. You can click on the "x" or "clear" to remove the text box from the map and on "done" when you have finished using this feature.




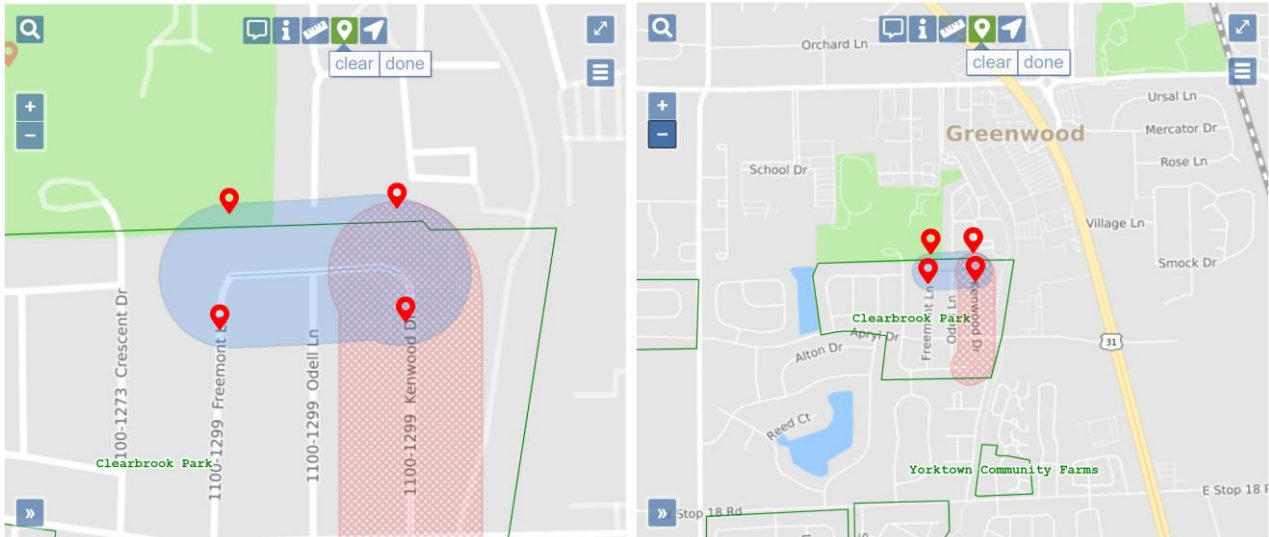
Ruler

The Ruler icon  in the top center of the map lets you measure distance. You can measure the distance from one intersection to another, the distance from a road into a field, or the distance along a road. Single left click to start a measurement, single left click to change directions, and double left click to end the measurement. The individual distances and the total footage will be displayed. You can click on "Clear" to remove all measured distances and on "Done" when you have finished using this feature. If you click on "Done", your measured distances will remain.



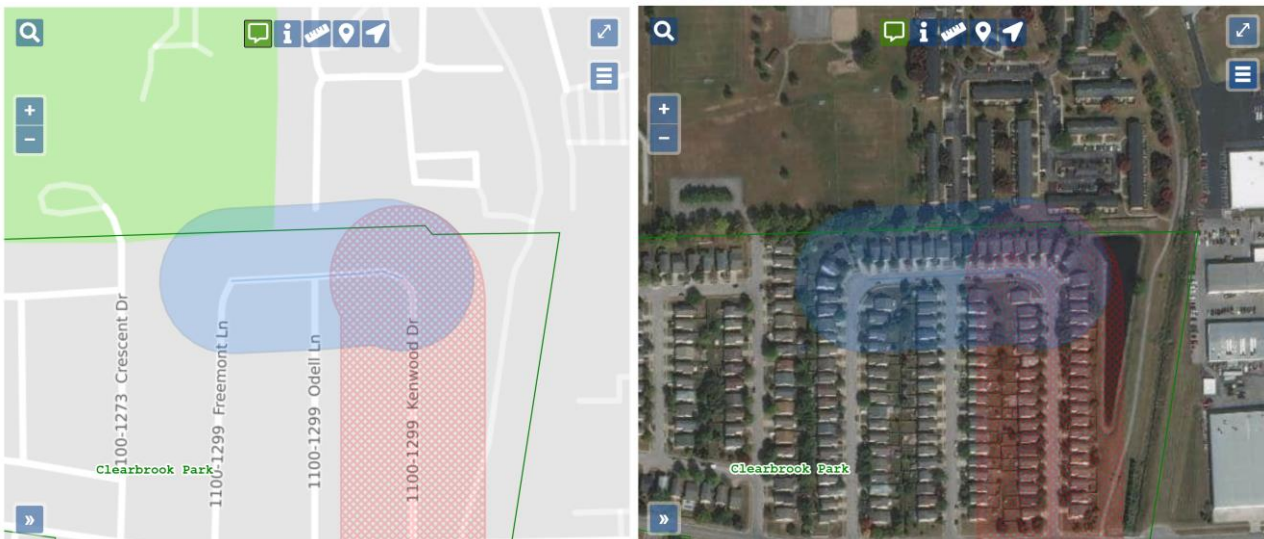
Push Pin

The Push Pin icon  in the top center of the map allows you to place multiple Push Pins on the map to mark locations. They remain visible no matter how far you zoom away from where they are placed. You can click on “Clear” to remove all push pins and on “Done” when you have finished using this feature.




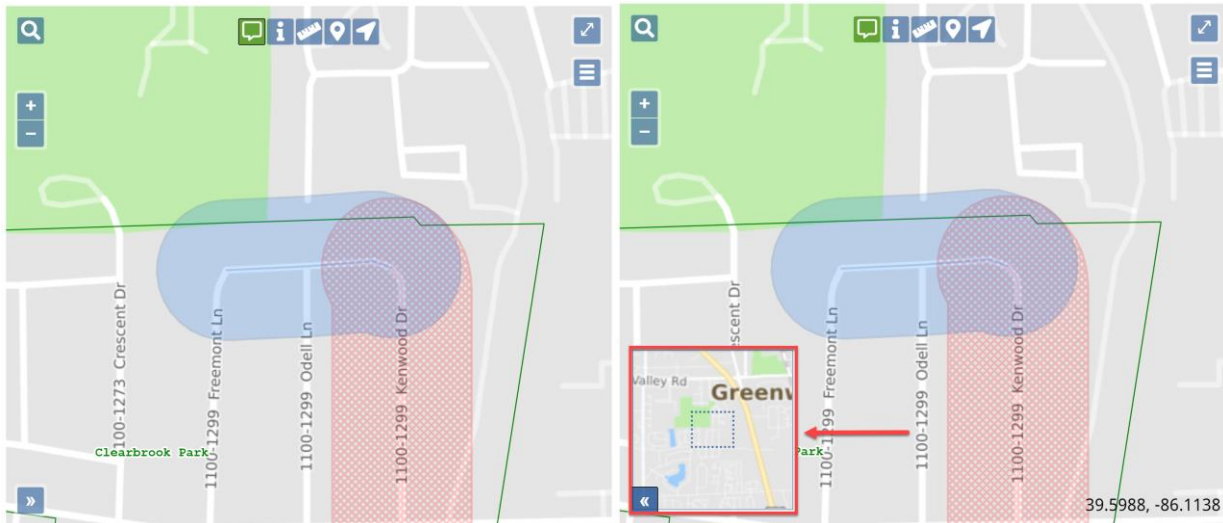
Position To Your Current Location

The Position To Your Current Location icon  in the top center of the map was developed for individuals using mobile devices. Using this feature on a mobile device, your current location will automatically be detected and will be displayed on the map. If you are using a non-mobile device, right click on the map and select “Zoom To Dig Site”.



Overview Map

The Overview Map icon  allows you to see an expanded/zoomed out overview of the area you have selected. This overview will display in the bottom left hand corner of the map. To remove this view, click on the Overview icon.

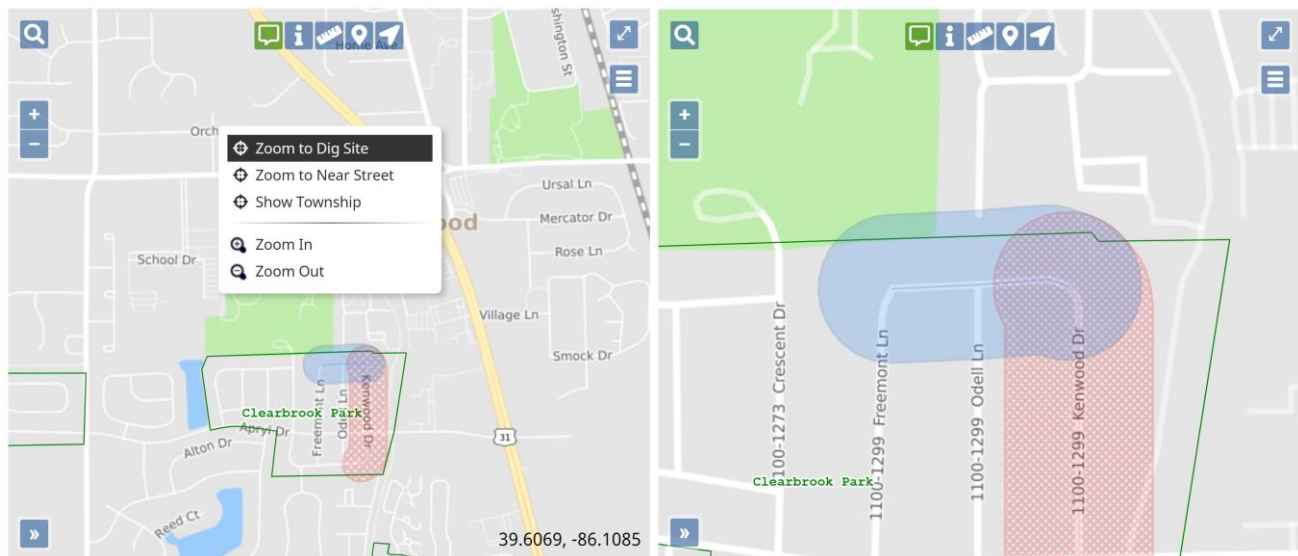


Additional Map Features

Several additional features are available when you “right click” on the map. Using the “right click” towards the bottom of the screen may affect being able to see some of the results when using this option.

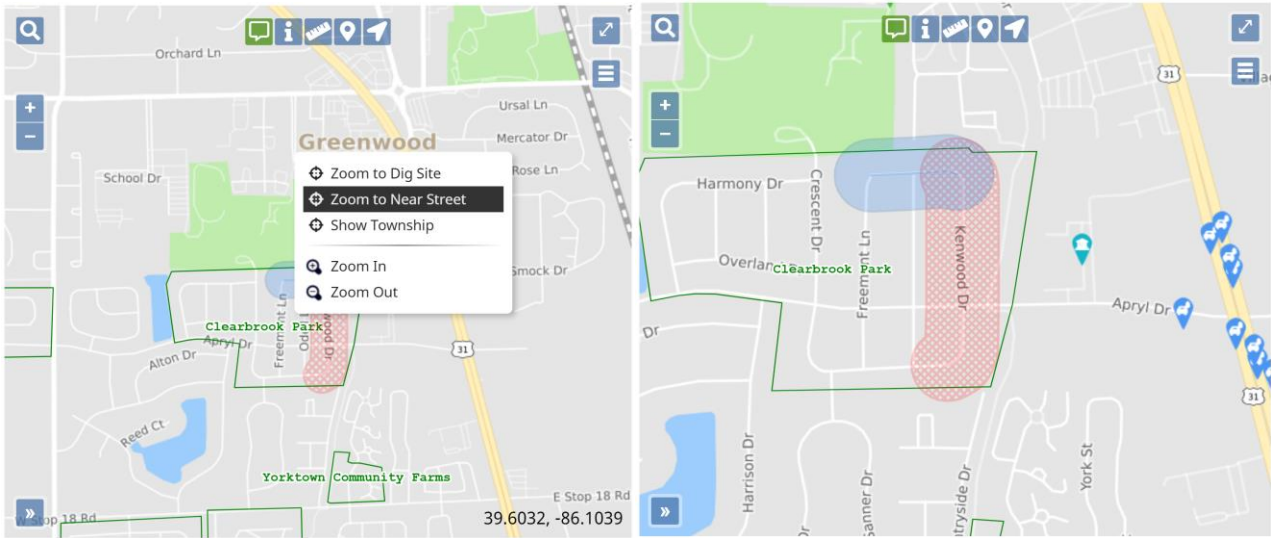
Zoom To Dig Site

If you zoom away from the dig site, you can “right click” on the screen and select “Zoom to Dig Site” to get back to where the ticket is mapped.



Zoom To Near Street

If the Near Street is not visible on the map, right click on the screen and select “Zoom to Near Street” to see where the Near Street is located. This feature is only visible if a Near Street has been provided.



Show Township

An entire township may be viewed by right clicking on the map and clicking on “Show Township”.

