

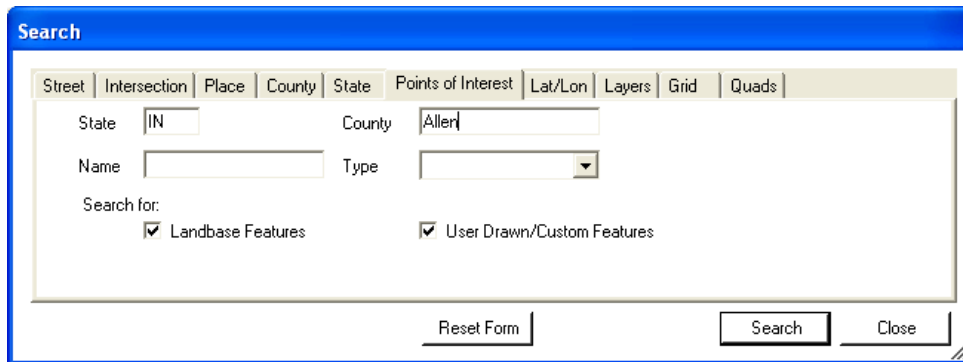
Finding and Mapping Subdivisions

Currently we have added over 10,000 subdivisions to the map across the State of Indiana and will continue to do so as accurate information is obtained. The following explains how to search for, and map, a subdivision:

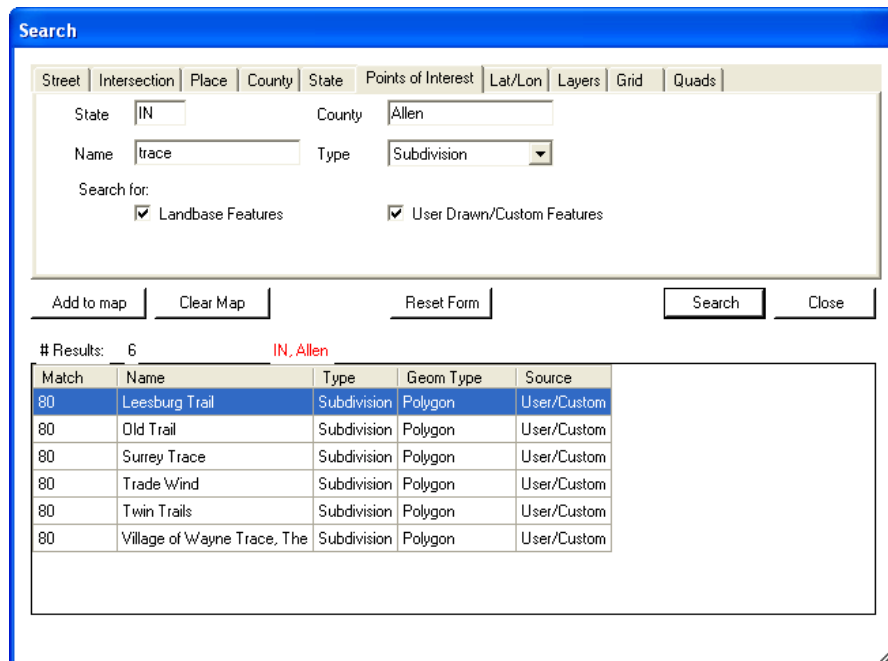
- If you cannot locate a dig site that you know is located within a subdivision, go to the map and select the **Search Tool**.



- Click on the **Points of Interest** tab.

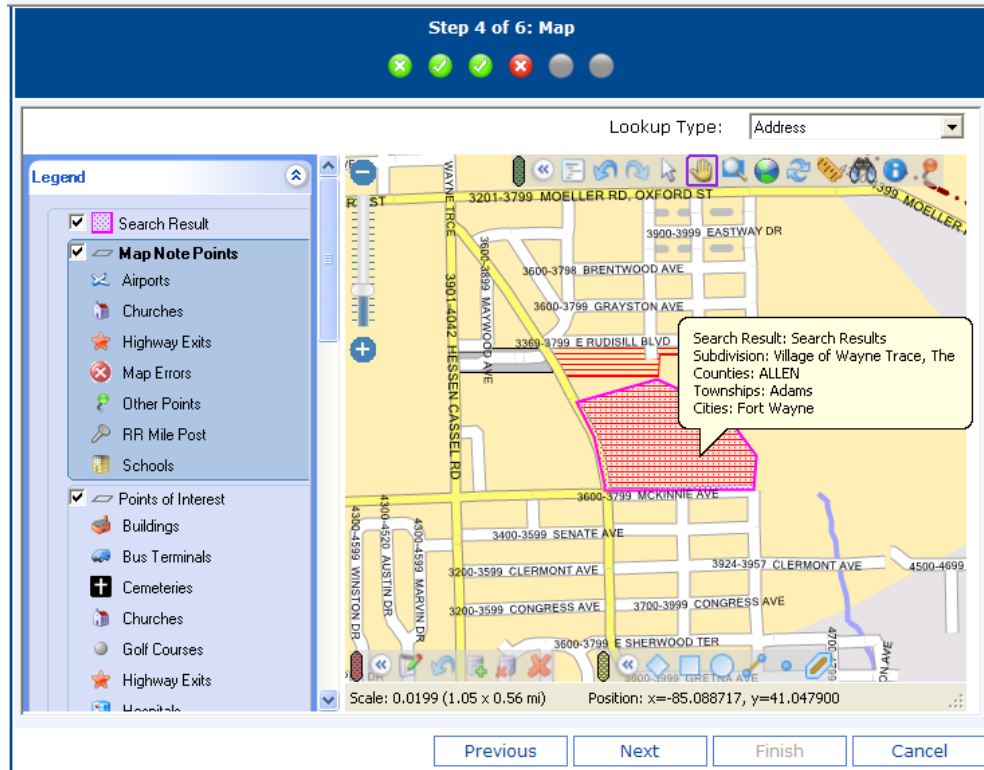


- Enter your search criteria by entering part of the subdivision name in the **Name** field and/or selecting “Subdivision” in the **Type** field and clicking on the “Search” button. A list of all subdivisions matching your criteria in that county will be listed.
- If you see the subdivision you are looking for, left click on the name to highlight it in blue and click “Add to map.”

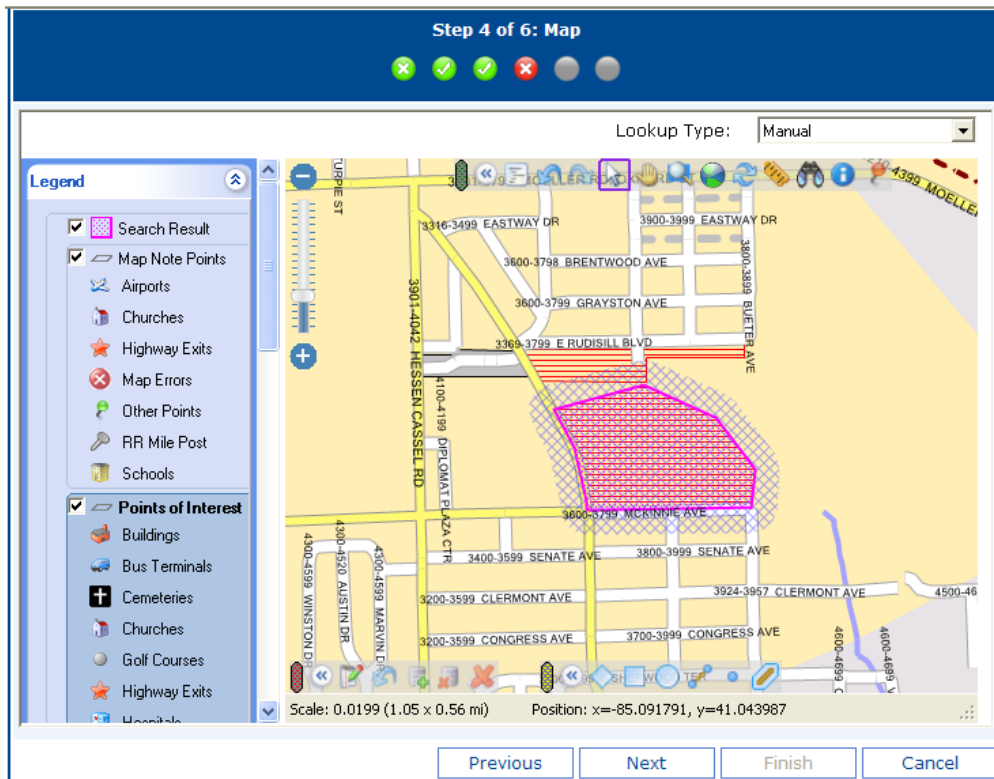


| Match | Name | Type | Geom Type | Source |
|-------|-----------------------------|-------------|-----------|-------------|
| 80 | Leesburg Trail | Subdivision | Polygon | User/Custom |
| 80 | Old Trail | Subdivision | Polygon | User/Custom |
| 80 | Surrey Trace | Subdivision | Polygon | User/Custom |
| 80 | Trade Wind | Subdivision | Polygon | User/Custom |
| 80 | Twin Trails | Subdivision | Polygon | User/Custom |
| 80 | Village of Wayne Trace, The | Subdivision | Polygon | User/Custom |

- The subdivision will appear on the screen in a bright pink color. If you move your cursor over the subdivision, the name will appear.



- Once you have confirmed that the system has selected the correct area (look at surrounding streets, check the township, etc.), utilize the **Drawing Tools** to draw your dig site. You may also select the **Cursor Tool** and double left click on the subdivision and the system will select the entire area for you with a 200 foot buffer.



NOTE: If you come across an area in which there should be a subdivision on our map and there is not, and you have information on it, please contact our office.

NOTE: Whenever your dig site is located within a subdivision and we do not have the internal roads listed on our map, please draw the dig site overly large and extend it to cover as much of the subdivision as possible mapping out to the main road it sets on. If you try and narrow down a smaller area, you are putting yourself at a greater risk of missing utilities. In any given situation, it is better to map an area larger than necessary than to map it too small and risk missing a utility.

- **Helpful Hints:**

- In counties with fewer subdivisions (like Brown County) you can leave the **Name field** blank and search for all subdivisions in the county.
- Be careful of your spelling. If you misspell a name, or omit any characters in the name, the subdivision may not be found.
- Always remember to check the 'T's' for subdivisions that may begin with the word 'The.'
- For your convenience, the **Search Box** is designed to stay open after a search in case your selection is not the correct one. Once you have found your correct subdivision select "Close."
- Always verify the mapping. This search is for the entire county, and our system may have more than one subdivision sharing the same name or similar names.